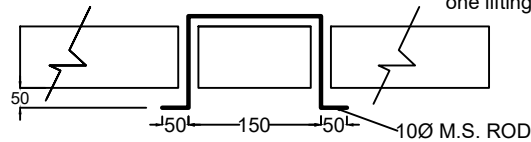


DIMENSIONS FOR TOP COVER OF CABLE TRENCH

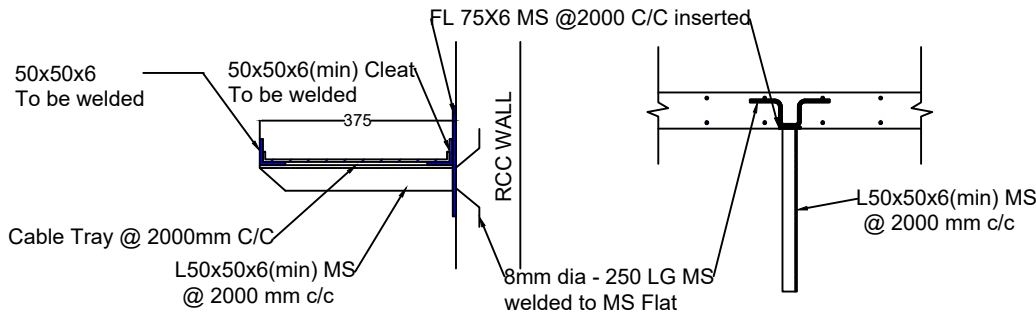
CABLE TRENCH TYPE	DIMENSIONS			
	A2	B1	B2	d
A	200	300	150	80
B	200	300	150	80
C	200	300	150	70
D		300	150	60

Note:- Covers for Cable trench Type-D shall have one lifting Lug at the center.

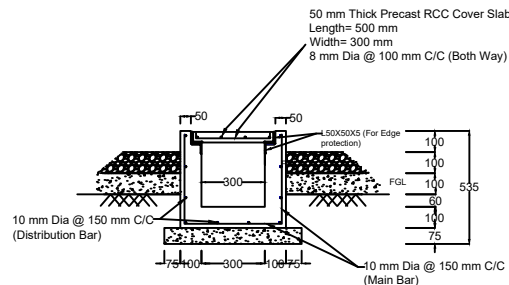


SECTION A-A

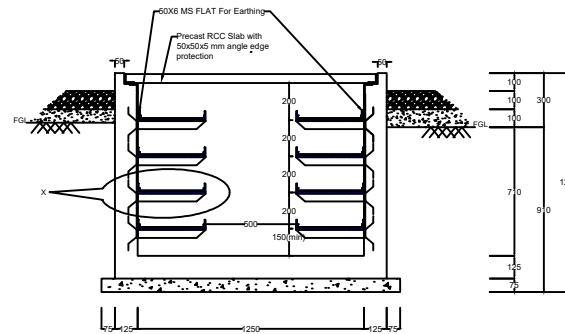
DETAILS OF PRECAST TOP COVER SLAB



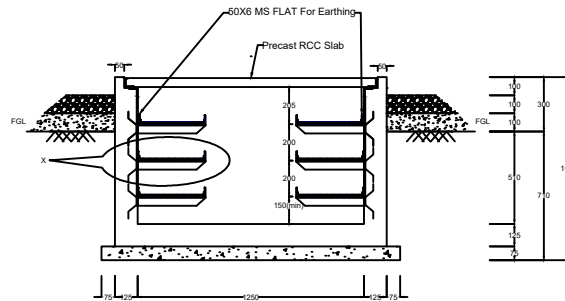
ENLARGED VIEW OF 'X' TOP VIEW OF INSERT PLATE, TRAY ANGLE & ANCHOR LUG



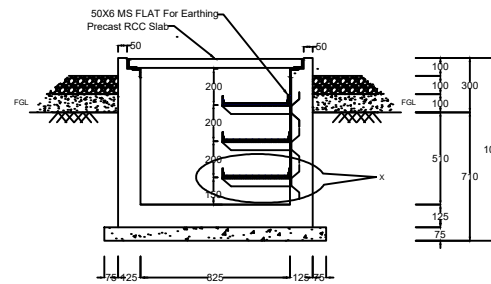
SECTIONAL AND REINFORCEMENT
DETAILS OF TYPE 'D'



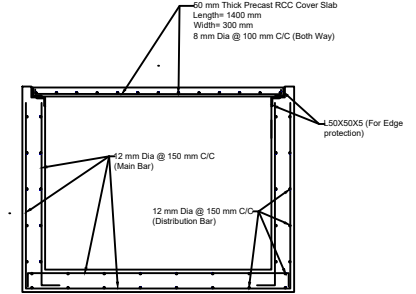
SECTIONAL DETAILS OF TYPE 'A'



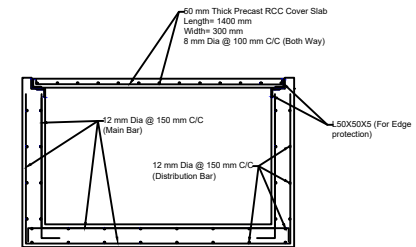
SECTIONAL DETAILS OF TYPE 'B'



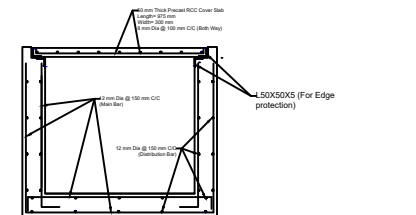
SECTIONAL DETAILS OF TYPE 'C'



REINFORCEMENT DETAILS OF TYPE 'A'



REINFORCEMENT DETAILS OF TYPE 'B'



REINFORCEMENT DETAILS OF TYPE 'C'

DRAWING TITLE:-

CABLE TRENCH DETAILS
(with edge protection)